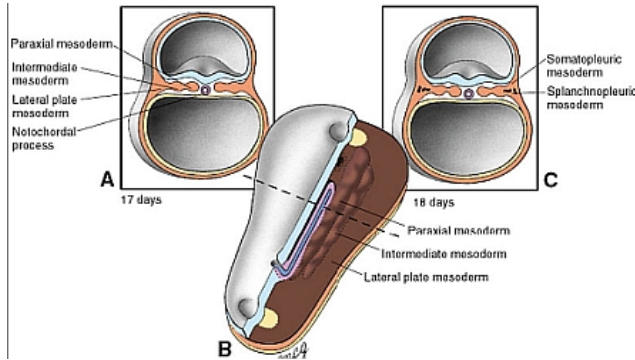


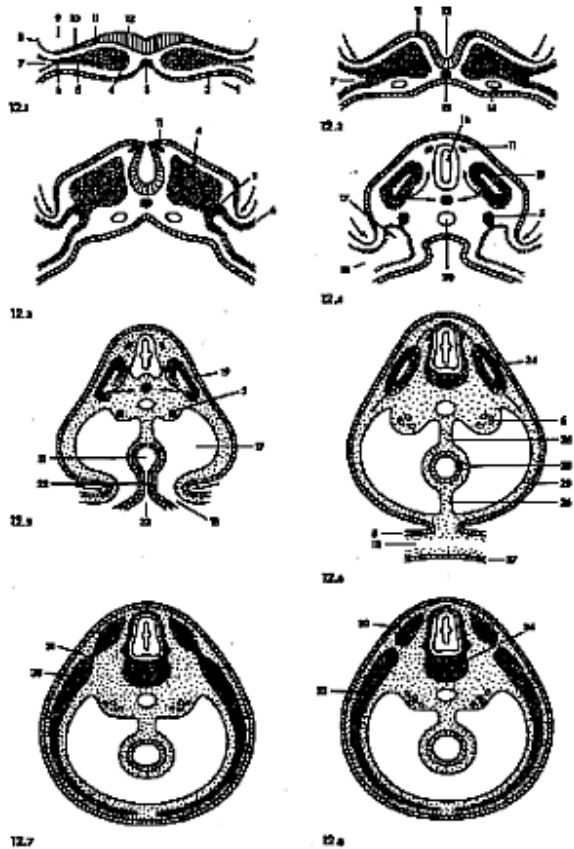
Hoofdstuk III: Ontwikkeling tot primitieve lichaamsvorm

Ontstaan primitieve uitwendige lichaamsvorm

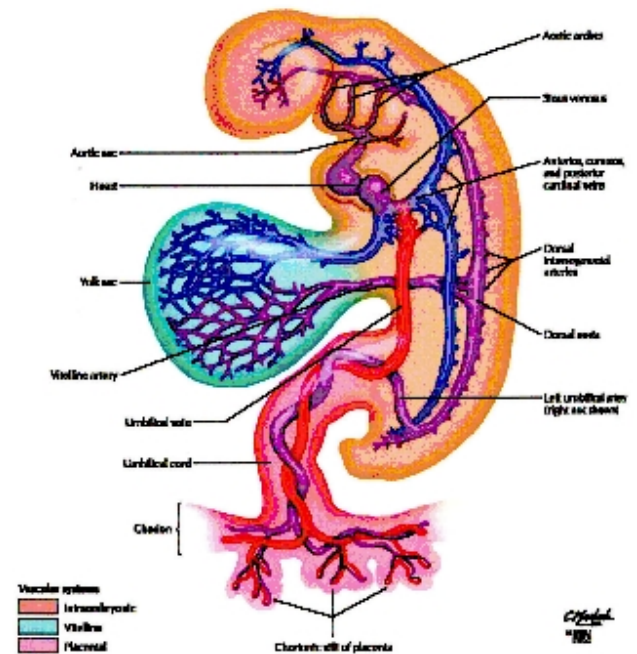
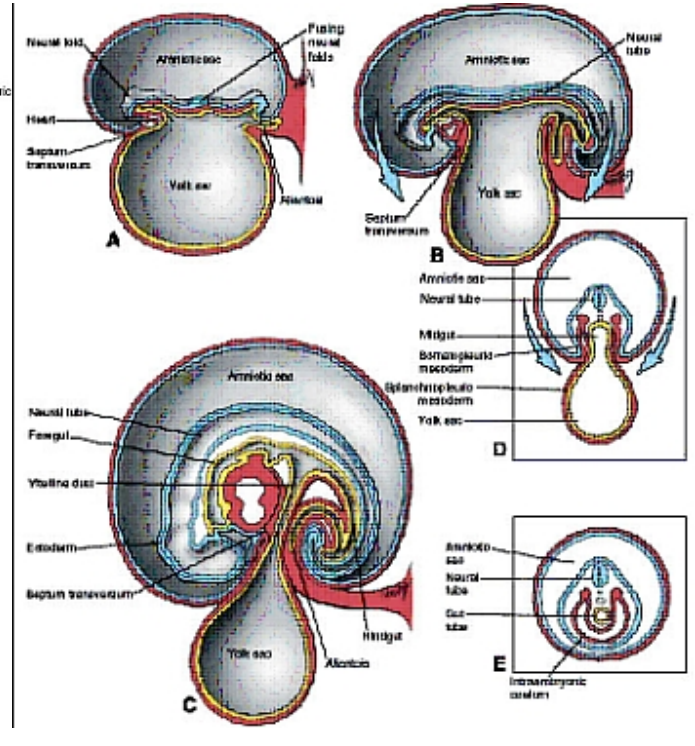
Differentiatie mesoblast langsheen mediaanlijn



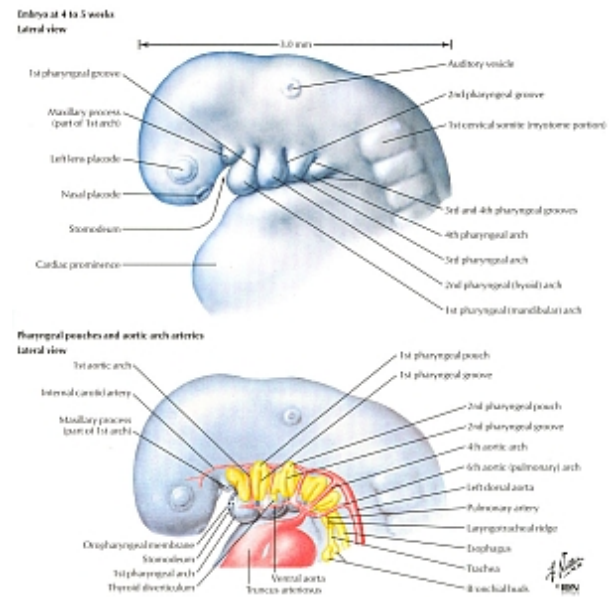
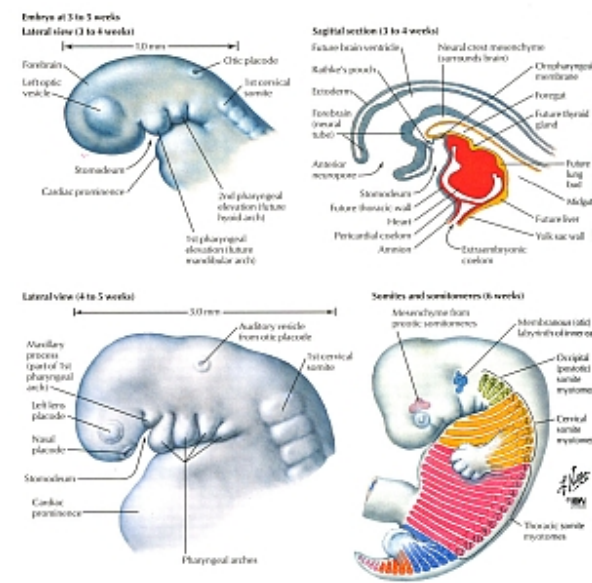
Ombouw kiemschijf naar 5 buisvormige structuren
 Primitieve uitwendige kop



Cephalo-caudale en dorso-ventrale plooiing



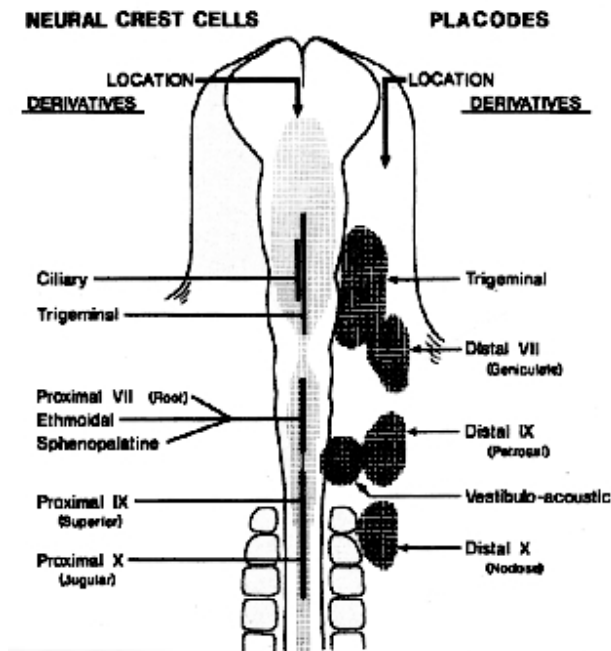
Kieuwbogen lateraal kopstreek



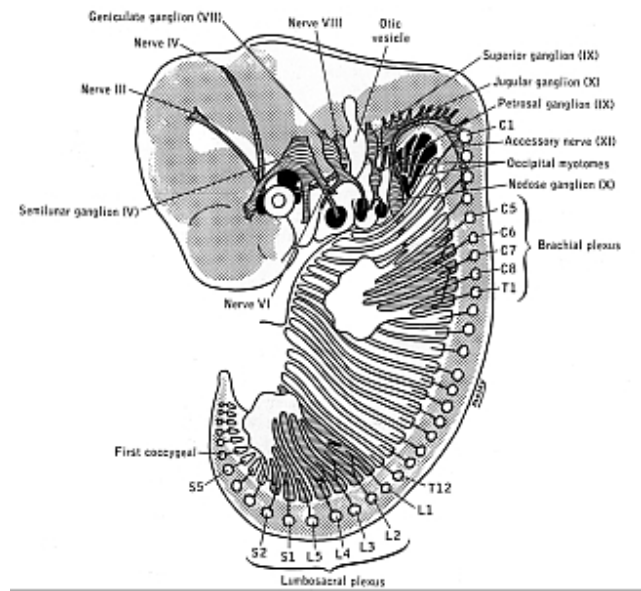
Ombouw en differentiatie kiembladen
 Differentiatie ectoblast

Neurale buis vormt aanleg ganse CZS

Placoden en eindbestemming NLC in kopstreek

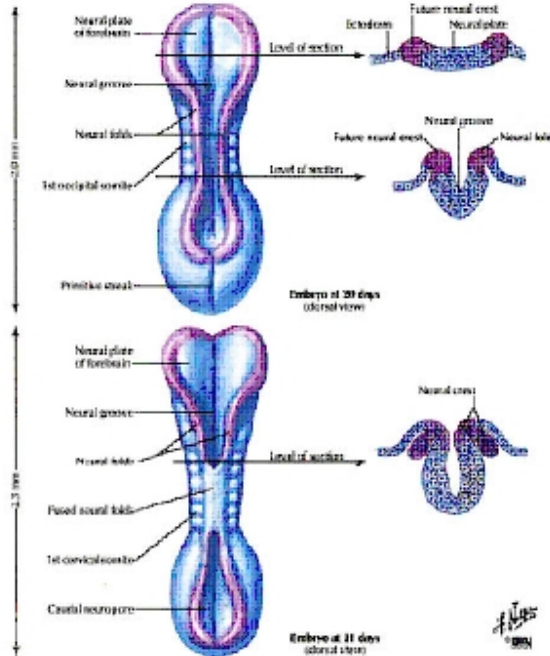


Aandeel placoden in vorming cerebrale ganglia

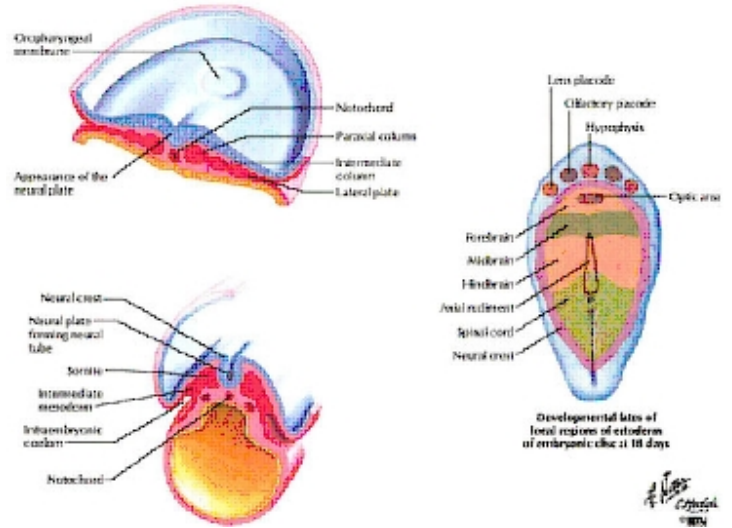


Vorming en evolutie neurale buis (NB) en neurale lijst (NL)

Ombouw neurale plaat tot neurale buis

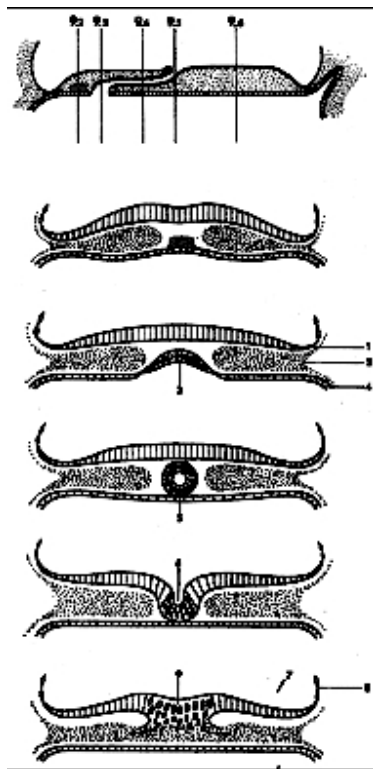


Celdifferentiatie en eindbestemming neurale plaat



- Totipotent: kunnen nieuw embryo maken of eender welk weefsel (>200)
- Pluripotent: vormen verschillende celtypes maar geen nieuw individu
- Multipotent (stamcellen): kunnen verschillende weefsels vormen

Canalis neurentericus verbinding NB - maagdartractus



Evolutie NB in kopstreek

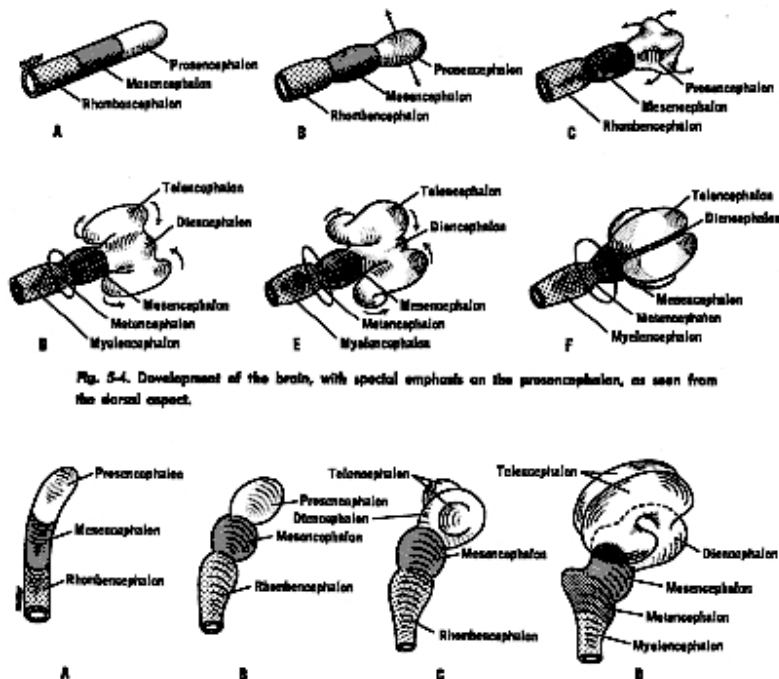
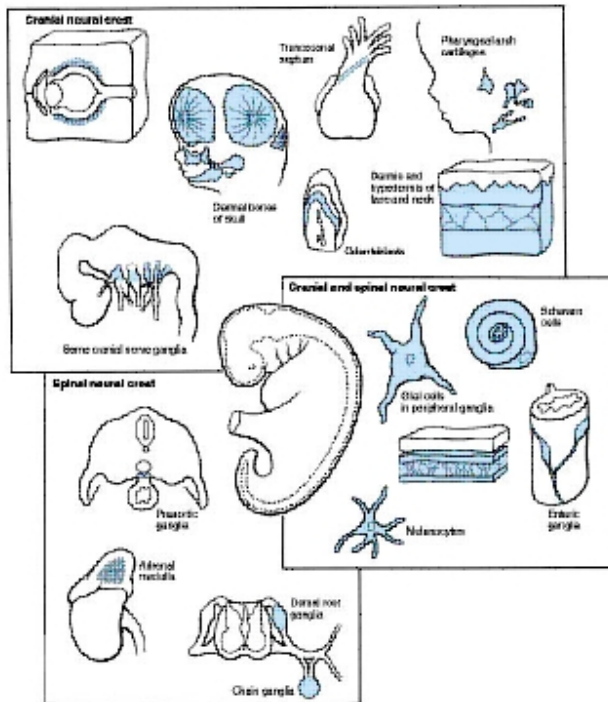


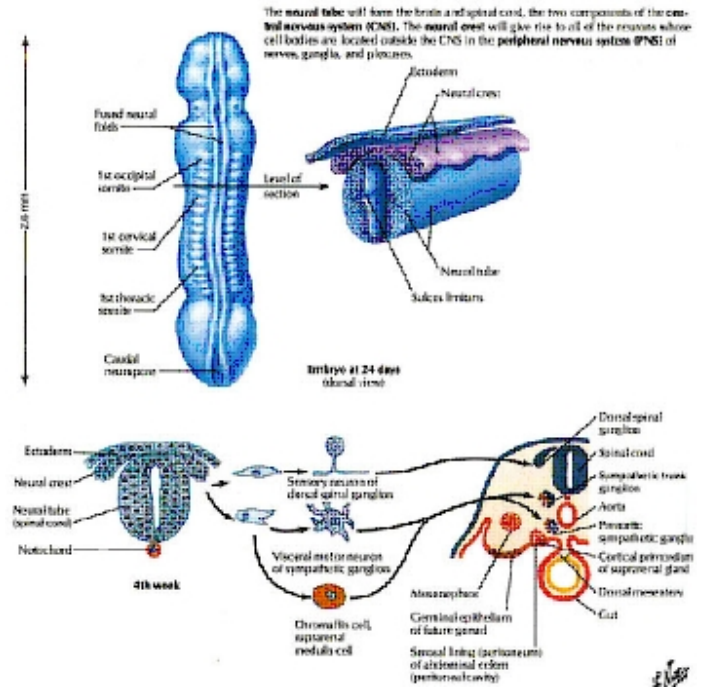
Fig. 5-4. Development of the brain, with special emphasis on the prosencephalon, as seen from the dorsal aspect.

Differentiatie neurale lijst cellen: overzicht

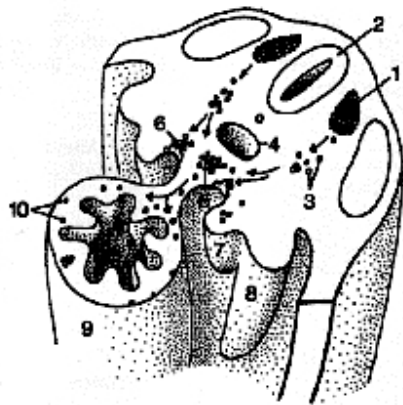


Churchill Livingstone Atlas and derived items copyright © 2009 by Churchill Livingstone

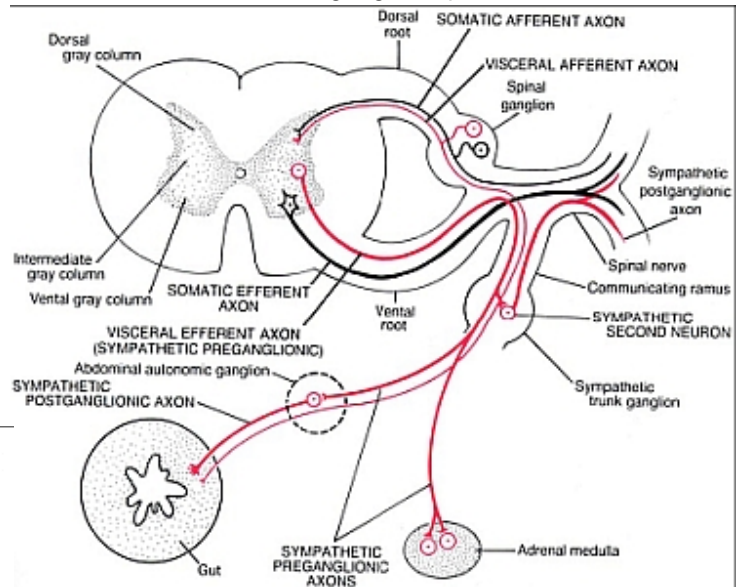
Opdeling NL in celgroepen oiv somietenvorming



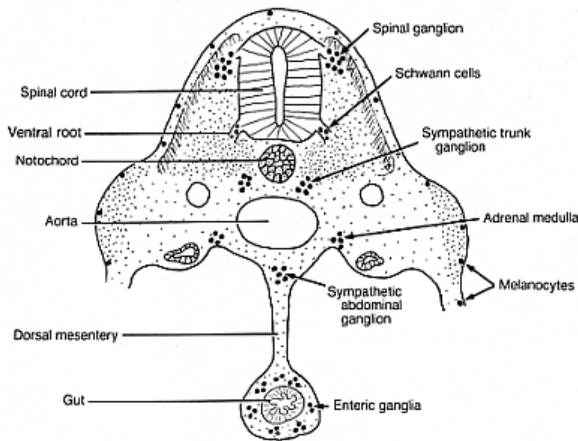
Migratie spinale NLC



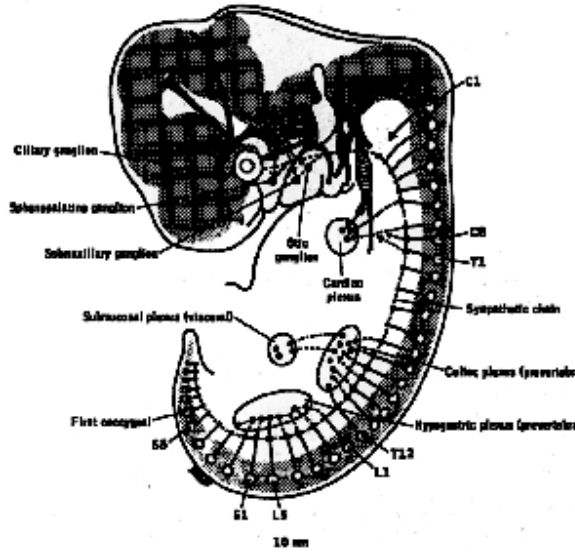
Functionele betekenis ganglion spinale



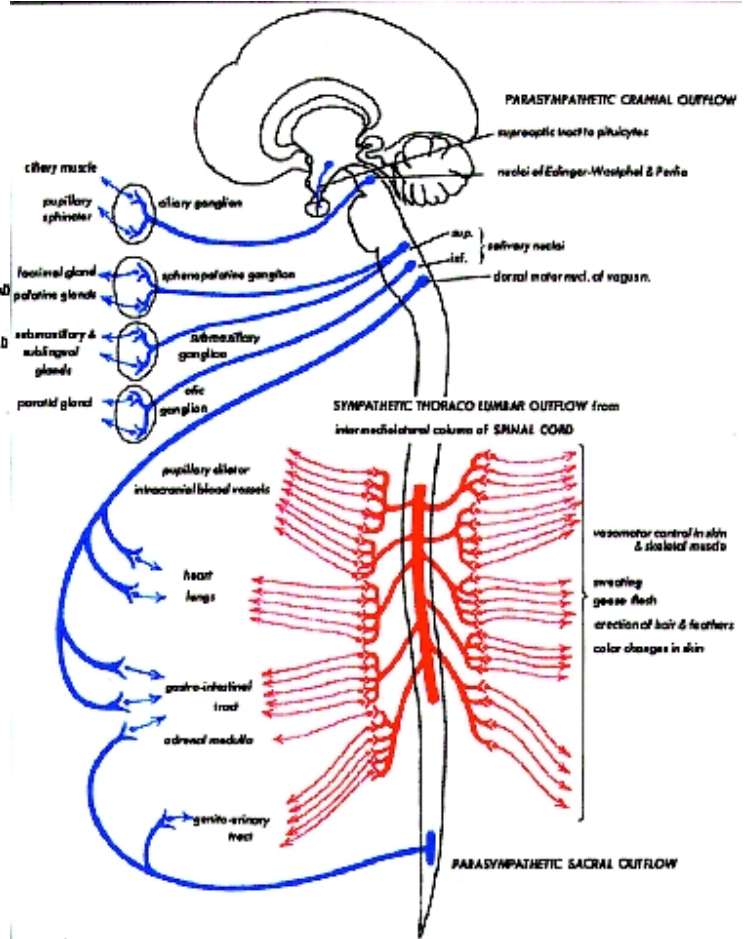
<<< Oorsprong autonome motoneuronen



Bijdrage NLC in vorming autonome ganglia thv kopzenuwen en ruggenmerg



Parasympatische en sympatische deel AZS



Waarom autonome ganglia?

