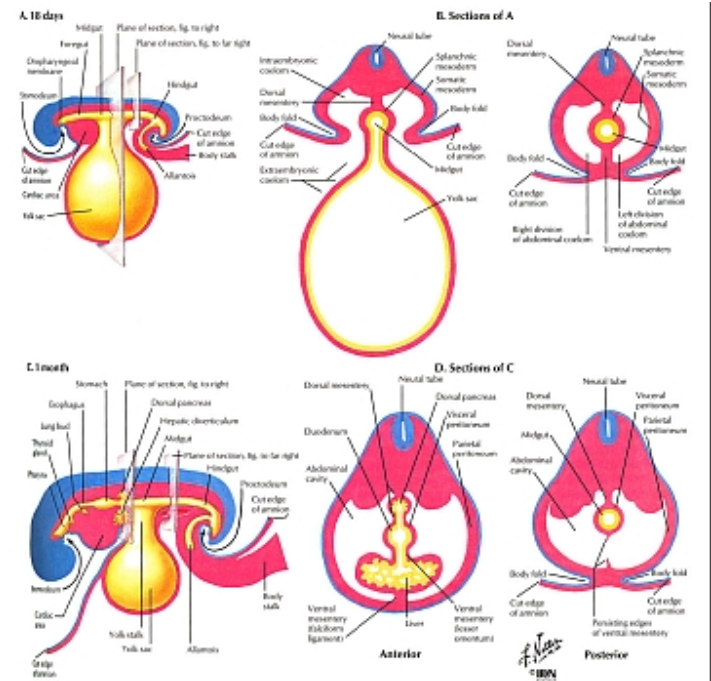
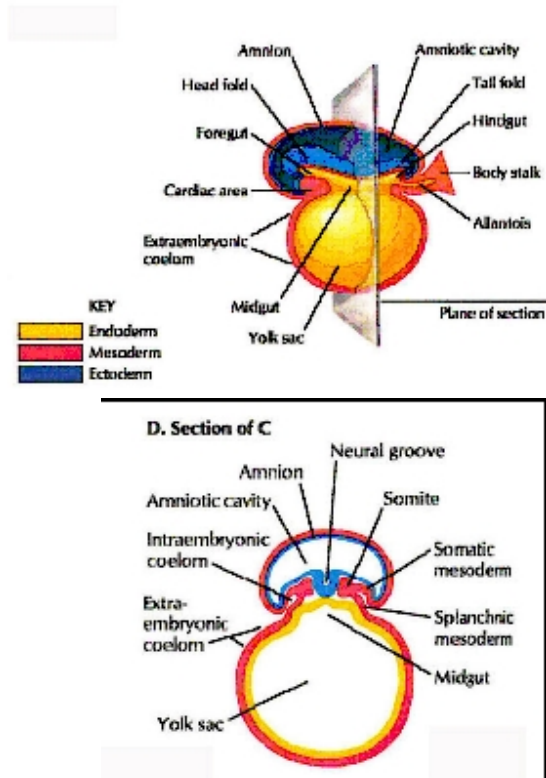


Ombouw en differentiatie van de kiembladen
Differentiatie entoblast

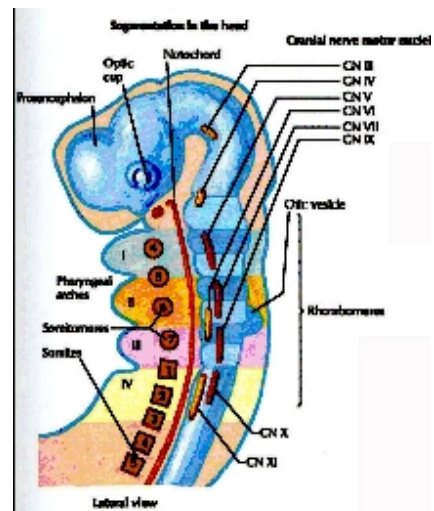
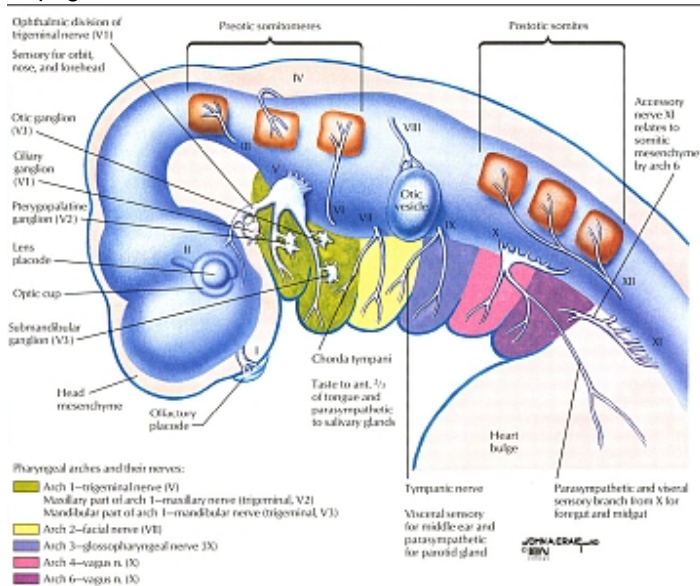
Vorming maagdarmsstelsel en mesenterium



Differentiatie mesoblast

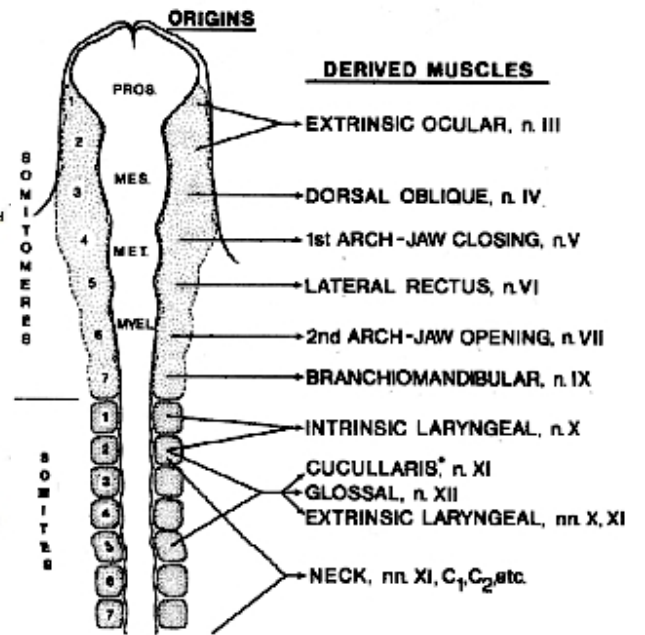
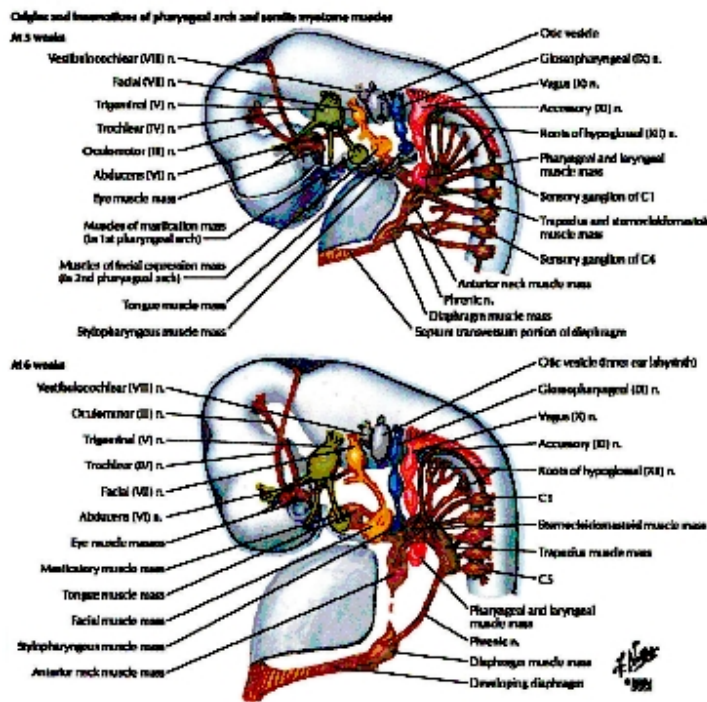
Ontwikkeling epimere

Topografie somitomenen



Ontwikkeling en innervatie pharyngeale spieren

Differentiatie somitomeeren

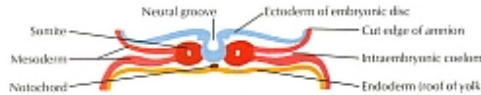


Evolutie somiet: vorming derma-, myo- en sclerotoom

Differentiation of somites into myotomes, sclerotomes, and dermatomes

Cross section of human embryos

A. At 19 days



B. At 22 days



C. At 27 days

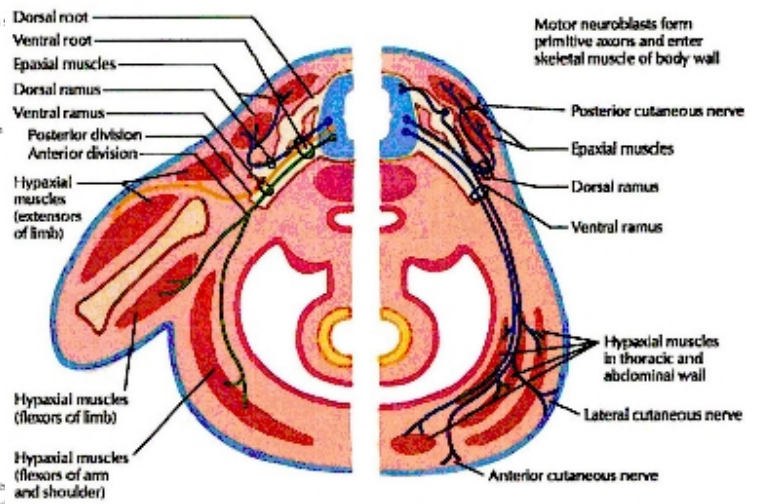


D. At 30 days

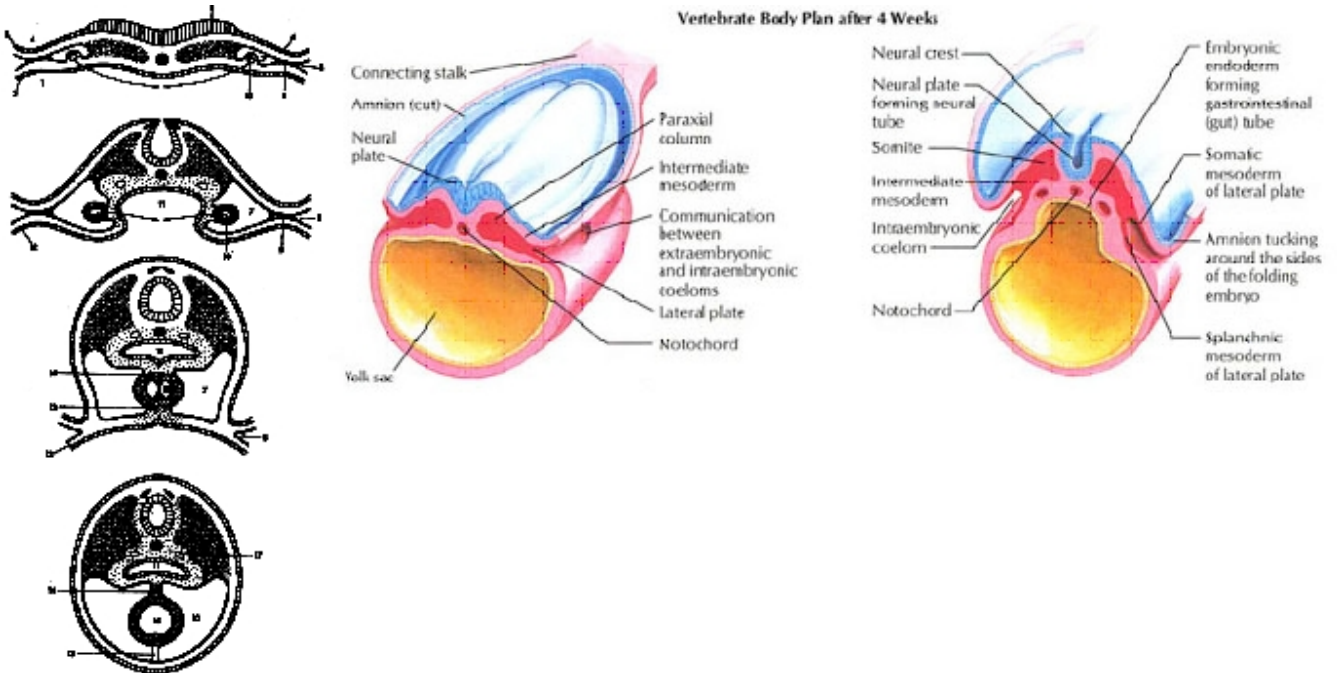


Opdeling myotoom in epaxiale en hypaxiale musculatuur

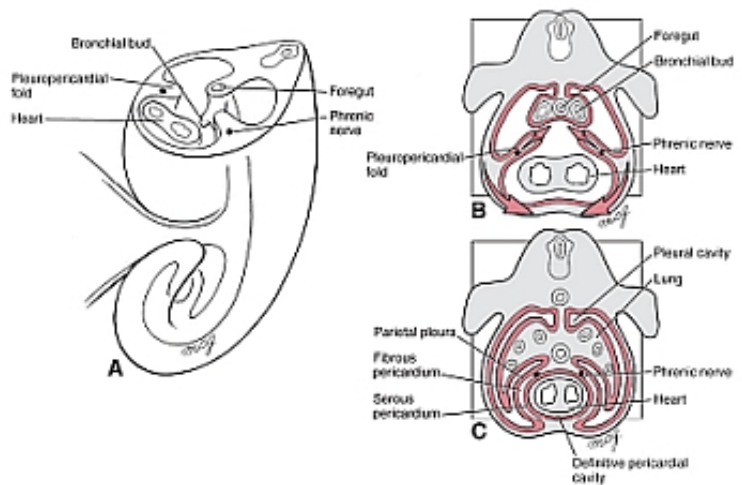
Somatic development



Septum transversum in de kopstreek
 Opsplitsing ventrale mesenterium in dorsale mesocard & ventrale mesocard



Vorming 1 pericardiale en 2 pleurale holte(n)



ChurchillLivingstone items and derived items copyright © 2002 by ChurchillLivingstone